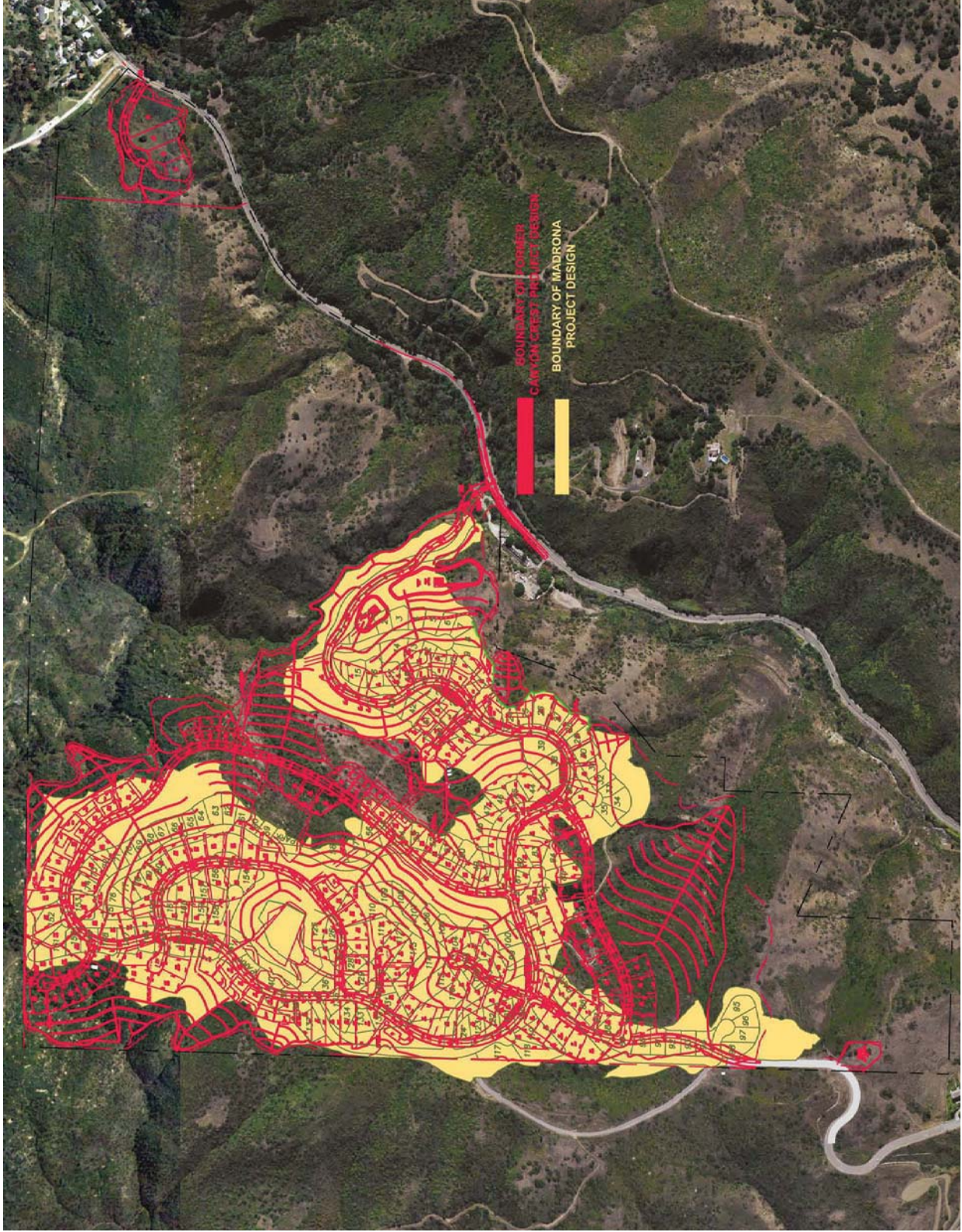


- 1** PROJECT ENTRY
- 2** RESIDENTIAL PAD
- 3** EMERGENCY ACCESS ROAD
- 4** PROJECT BOUNDARY
- 5** MANUFACTURED SLOPES-TYPICAL
- 6** NATURAL OPEN SPACE
- 7** CITY RESERVOIR TANKS
- 8** DETENTION BASINS

PAD/LOT AREA TABLE														
LOT	PAD SIZE (SF)	LOT SIZE (SF)	LOT	PAD SIZE (SF)	LOT SIZE (SF)	LOT	PAD SIZE (SF)	LOT SIZE (SF)	LOT	PAD SIZE (SF)	LOT SIZE (SF)	LOT	PAD SIZE (SF)	LOT SIZE (SF)
1	11,683	17,932	34	11,968	13,571	67	9,025	9,858	100	10,448	11,307	133	12,624	14,241
2	7,363	10,492	35	10,635	11,778	68	8,729	9,429	101	16,038	27,044	134	13,348	15,778
3	8,178	12,266	36	8,942	15,654	69	8,479	9,182	102	10,910	14,767	135	11,535	12,797
4	8,246	11,558	37	8,560	17,334	70	8,116	8,817	103	9,507	13,461	136	10,832	11,484
5	9,282	12,177	38	7,925	18,428	71	8,470	9,182	104	11,859	16,151	137	15,309	18,666
6	8,705	10,220	39	10,691	28,377	72	11,711	12,767	105	11,534	15,490	138	11,562	14,524
7	10,134	11,482	40	11,192	12,955	73	12,525	13,584	106	10,480	12,792	139	13,760	14,701
8	11,092	12,495	41	9,615	13,698	74	10,025	12,152	107	10,674	11,529	140	14,274	18,280
9	18,815	29,490	42	9,742	13,324	75	9,124	11,809	108	10,742	12,254	141	12,773	15,364
10	14,052	25,659	43	11,450	19,364	76	9,443	10,703	109	14,533	16,351	142	13,335	17,680
11	8,573	11,274	44	13,498	19,814	77	9,179	12,175	110	19,494	41,860	143	11,132	11,983
12	6,585	10,137	45	8,376	11,435	78	7,845	10,788	111	14,524	46,739	144	11,862	12,719
13	7,306	11,326	46	9,202	13,687	79	7,742	11,178	112	11,478	25,611	145	11,925	12,783
14	10,185	18,824	47	11,069	14,972	80	7,600	12,088	113	12,363	28,582	146	12,666	15,558
15	8,627	14,691	48	12,513	32,601	81	13,866	16,231	114	11,818	34,738	147	11,609	15,809
16	10,379	14,760	49	9,053	13,976	82	15,670	17,645	115	11,174	35,811	148	11,347	15,445
17	8,832	12,355	50	9,817	12,862	83	17,551	19,663	116	11,182	36,367	149	12,054	13,018
18	9,976	13,476	51	9,553	12,355	84	16,287	18,173	117	19,813	19,813	150	11,340	12,215
19	9,605	13,746	52	7,656	10,869	85	16,888	19,665	118	20,991	22,456	151	22,952	25,653
20	8,881	13,531	53	10,117	13,183	86	15,610	17,238	119	22,100	24,586	152	22,118	25,350
21	12,593	24,369	54	12,704	18,350	87	12,173	13,028	120	16,778	18,968	153	23,175	25,669
22	16,448	30,183	55	18,304	23,506	88	14,820	15,685	121	12,721	12,622	154	11,898	14,765
23	16,933	23,363	56	18,140	24,058	89	18,798	19,816	122	12,745	13,624	155	16,020	17,757
24	8,275	11,147	57	8,837	13,896	90	13,987	16,298	123	13,854	14,763	156	17,200	18,944
25	9,497	14,120	58	12,028	13,713	91	12,807	13,754	124	12,983	14,971	157	16,399	17,531
26	15,321	19,920	59	7,497	9,308	92	11,164	12,020	125	16,252	25,409	158	11,770	13,923
27	11,132	14,501	60	7,172	8,044	93	11,134	11,984	126	12,961	14,767	159	10,858	12,222
28	12,202	16,959	61	9,637	10,621	94	11,660	13,405	127	9,814	11,371	160	17,478	20,614
29	8,727	12,438	62	13,490	14,553	95	12,928	16,114	128	12,072	14,063	161	13,730	14,732
30	8,055	11,259	63	13,867	14,976	96	10,223	11,394	129	14,239	16,769	162	15,224	19,439
31	7,437	10,695	64	9,630	10,483	97	13,173	14,064	130	14,200	16,968			
32	8,270	10,062	65	8,440	9,156	98	11,360	13,475	131	16,751	18,724			
33	8,148	8,872	66	8,384	9,200	99	12,610	14,806	132	15,433	17,486			

Source: Cornwell & Associates, February 2012



Source: Cornwell & Associates, February 2012

Figure 2.2 - Comparison of Madrona and Canyon Crest Grading Footprints
 2012 Update of EIR 02-01
 November 2012